

Project:

GPS Plus X

Title:

Quick Setup Guide

Version: 1.0.0

Last Change: 2013-04-10

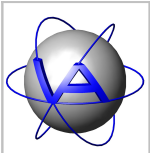


**VECTRONIC
Aerospace
GmbH**

GPS Plus X quick setup guide

Document.	GPS Plus X quick setup v1.odt		
Version	1	Date:	2013-04-10
Issue	1	Date:	2013-04-10
Page	I		

	Name	Date	Signature
Prepared by	N. Fiola	2013-04-10	
Checked by			
Approved by			
Authorized by			



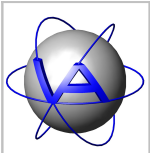
**VECTRONIC
Aerospace
GmbH**

GPS Plus X quick setup guide

Document.	GPS Plus X quick setup v1.odt		
Version	1	Date:	2013-04-10
Issue	1	Date:	2013-04-10
Page	II		

DOCUMENT CHANGE RECORD

Issue	Date	Item(s) Affected	Description
1	2013-04-10	-	Initial Issue



**VECTRONIC
Aerospace
GmbH**

GPS Plus X quick setup guide

Document.	GPS Plus X quick setup v1		
Version	1	Date:	2013-04-10
Issue	1	Date:	2013-04-10
Page	III		

Table of Contents

1	Introduction.....	1
2	Installation.....	1
3	Collar Registration and Configuration.....	4
3.1	Register Collars.....	4
3.2	Configure Collars.....	4
4	HTTP Data Collector.....	7
4.1	Configuration.....	7
4.2	Downloading Collar Data.....	8
4.3	Validation.....	8
5	Access Collar Data.....	10

 VECTRONIC Aerospace GmbH	GPS Plus X quick setup guide	Document. GPS Plus X quick setup v1			
		Version	1	Date:	2013-04-10
		Issue	1	Date:	2013-04-10
		Page	1		

1 Introduction

GPS Plus X is a software package which allows users to manage and configure VECTRONIC Aerospace wildlife tracking collars and to download, process, and store collar-collected data.

This quick setup manual will guide you through the process of installing GPS Plus X on your computer and describes how to register your collars and how to configure GPS Plus X so that it automatically downloads collected collar data from VECTRONIC Aerospace's HTTP Data Service.

For technical details regarding the HTTP Data Service and how to access it refer to chapter 4 HTTP Data Collector (p. 7).

2 Installation

Starting the installation

Double left-click the installation file 'GPS Plus X V10.xx.xx setup.exe' to start the installation. You will be prompted with a welcome message (Figure 1). Click the **Next** button.

The following window presents the License Agreement. You need to agree to be able to use GPS Plus X. Press the **I Agree** button to continue, click **Cancel** if you do not agree with the license (Figure 2).



Figure 1: Installation: Welcome Message

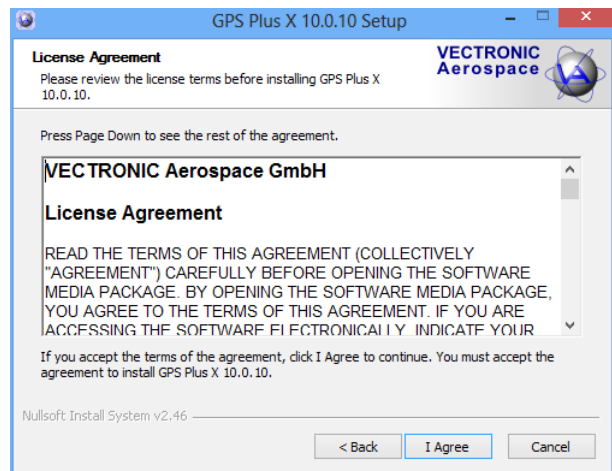
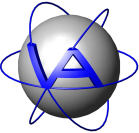


Figure 2: Installation: License Agreement

 VECTRONIC Aerospace GmbH	GPS Plus X quick setup guide	Document. GPS Plus X quick setup v1			
		Version	1	Date:	2013-04-10
		Issue	1	Date:	2013-04-10
		Page	2		

Choose Components

The next window lets you choose which components of GPS Plus X you wish to install (Figure 3). Simply accept the default selection and click **Next**.

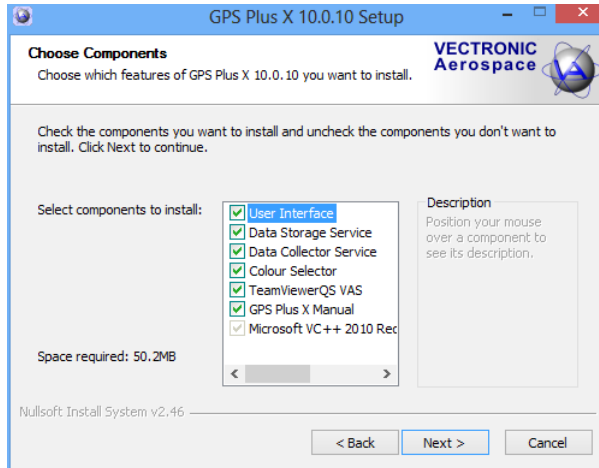


Figure 3: Installation: Components Selection

Automatic HTTP Data Download

The next window allows to enable/disable automatic download of collar data from VECTRONIC's HTTP Data Service. To enable this feature please make sure the box **Enable automatic data download via HTTP** is checked (Figure 4).

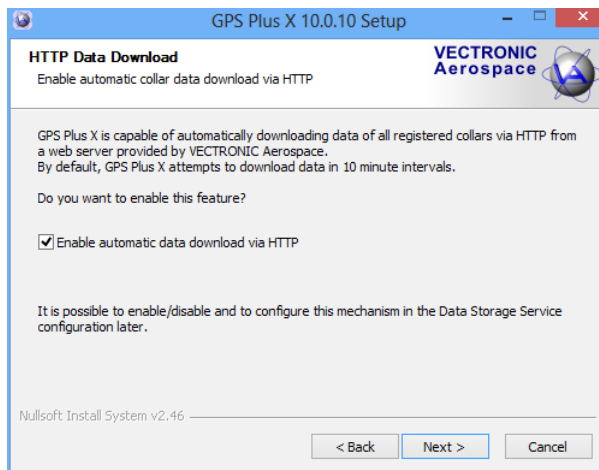
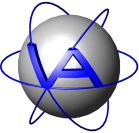


Figure 4: Installation: Enable/Disable automatic data download

Please click the **Next** button to continue to the next step.

 VECTRONIC Aerospace GmbH	GPS Plus X quick setup guide	Document. GPS Plus X quick setup v1			
		Version	1	Date:	2013-04-10
		Issue	1	Date:	2013-04-10
		Page	3		

Choose Install Location

The next window provides means to define the location at which GPS Plus X will be installed on your computer (Figure 5). Click the **Browse** button to navigate to the desired location or simply click the **Install** button to use the default path (recommended).

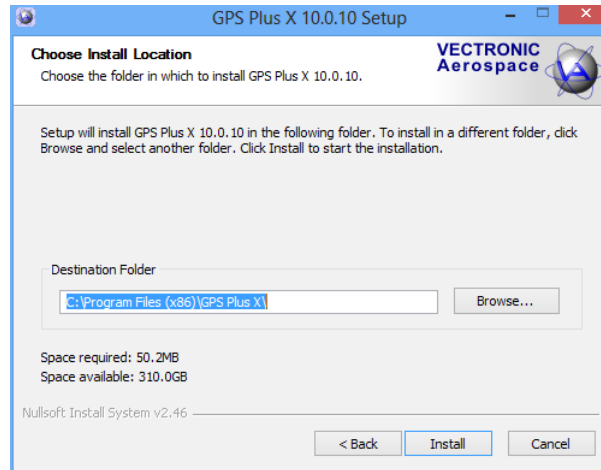


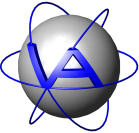
Figure 5: Installation: Chose Install Location

Completing the Setup Wizard

After installation was completed the setup wizard presents a final window allowing you to run GPS Plus X by checking the **Run GPS Plus X 10.xx.xx** check box. If you do not wish to start GPS Plus X please uncheck the check box. Click the **Finish** button to complete the installation wizard.



Figure 6: Installation: Final Step

 VECTRONIC Aerospace GmbH	GPS Plus X quick setup guide	Document. GPS Plus X quick setup v1			
		Version	1	Date:	2013-04-10
		Issue	1	Date:	2013-04-10
		Page	4		

3 Collar Registration and Configuration

GPS Plus X requires collars to be registered with the system for it to allow communication with the devices and to process and store their data. To register and configure your collars, please follow these steps:

3.1 Register Collars

Please start GPS Plus X. If you decided to let the installation wizard execute GPS Plus X for you, the program should have started automatically. Please click on the Collars item of the configuration tree in the Configuration section on the left-hand side of the main window. This will bring up the Collar List (Figure 8).

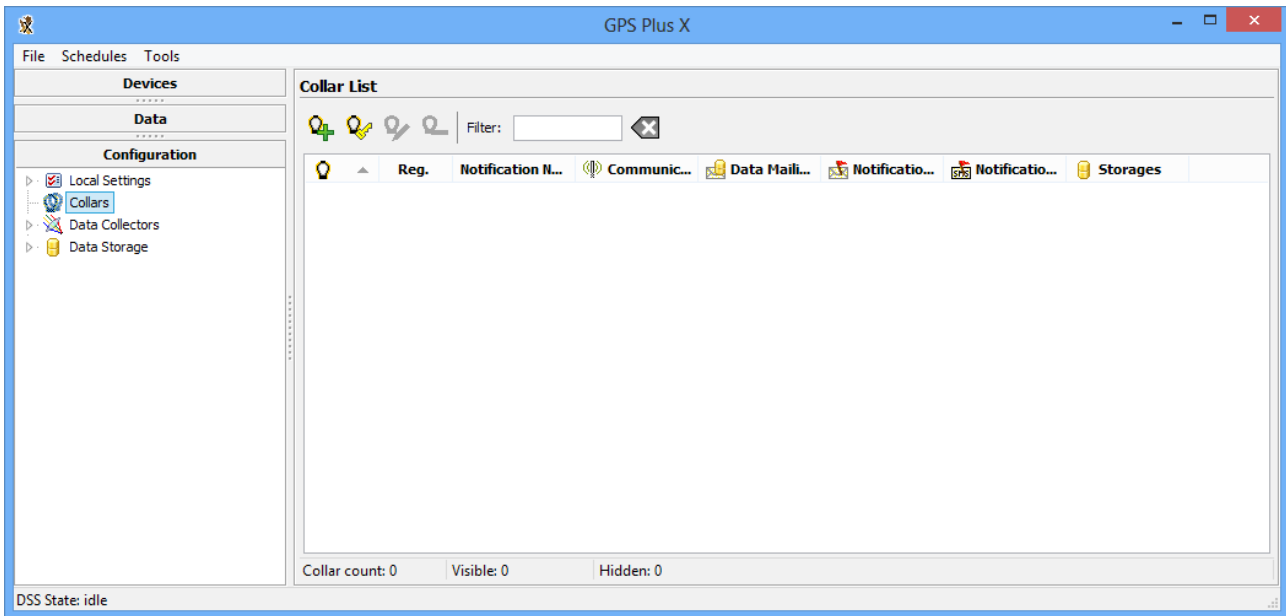



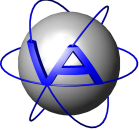
Figure 7: GPS Plus X Collar List

To register your collars please click the **Add or update collars from key files**  button. Select your GPS Plus X Collar Key Files (*.keyx) of the collars you want to register and click the **Open** button. The collars are now added to the collar list.

Collars in your collar list need to be assigned to one of the defined Data Storage Modules. In a default installation there is only one Storage Module named 'Default Storage'. Please read the following chapter to learn how to assign collars to Data Storage Modules.

3.2 Configure Collars

GPS Plus X provides means to simultaneously edit properties of multiple collars. To do this, please select all your collars either by left-clicking into the Collar List and afterwards pressing the CTRL+a key combination or clicking and holding the left mouse button to “draw” a rectangle including the collars to edit. Then click the right mouse button on one of the selected collars to show the list of available group edit options (Figure 8). Select **Group edit: Storage Destinations** which will open a new window.

 VECTRONIC Aerospace GmbH	GPS Plus X quick setup guide	Document. GPS Plus X quick setup v1			
		Version	1	Date:	2013-04-10
		Issue	1	Date:	2013-04-10
		Page	5		

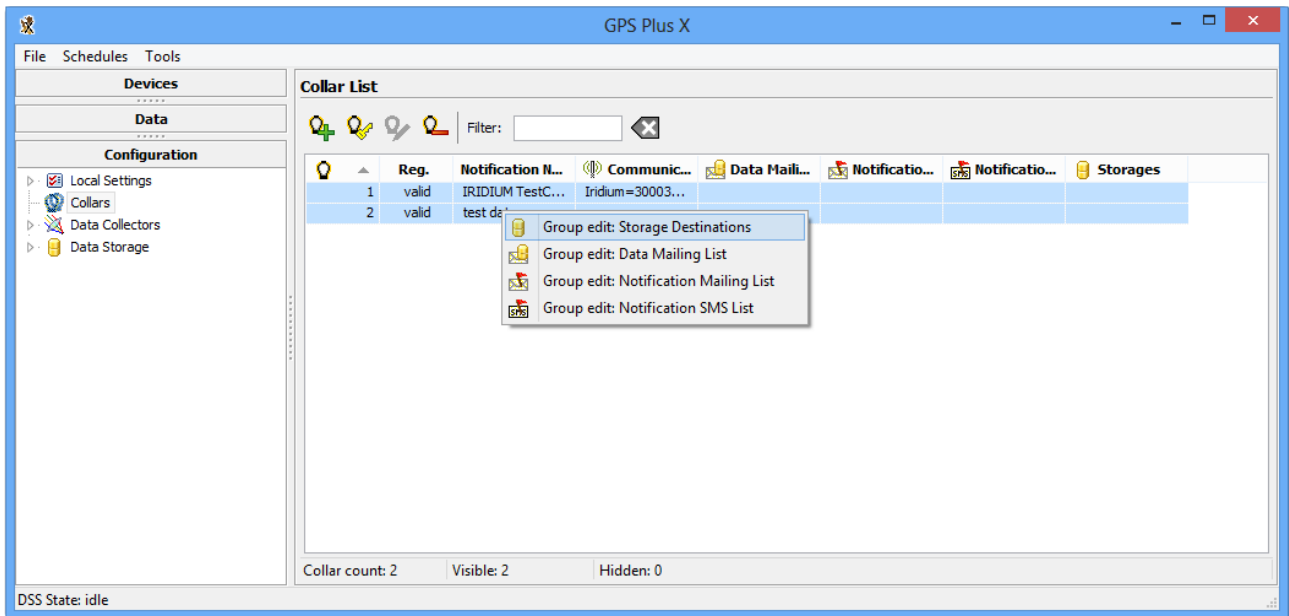


Figure 8: GPS Plus X: Collar Group Edit

The new window (Figure 9) allows to define a Data Storage Modules in which data of the selected collars shall be stored. Clicking the **Add new to all** button will show a new entry in the list containing a drop-down list. The drop-down list contains all Data Storage Modules currently defined in the system. Select **Default Storage** and press the **Return/Enter** key. Then click **OK**. The Collar List will now show the assigned Data Storage Modules in the corresponding column for all selected collars (Figure 10).

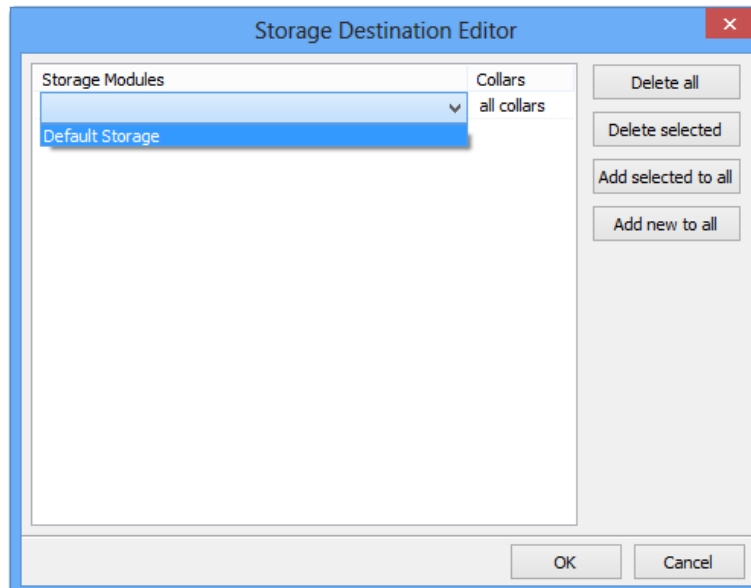


Figure 9: GPS Plus X: Collar Storage Destination Group Editor

 VECTRONIC Aerospace GmbH	GPS Plus X quick setup guide	Document. GPS Plus X quick setup v1			
		Version	1	Date:	2013-04-10
		Issue	1	Date:	2013-04-10
		Page	6		

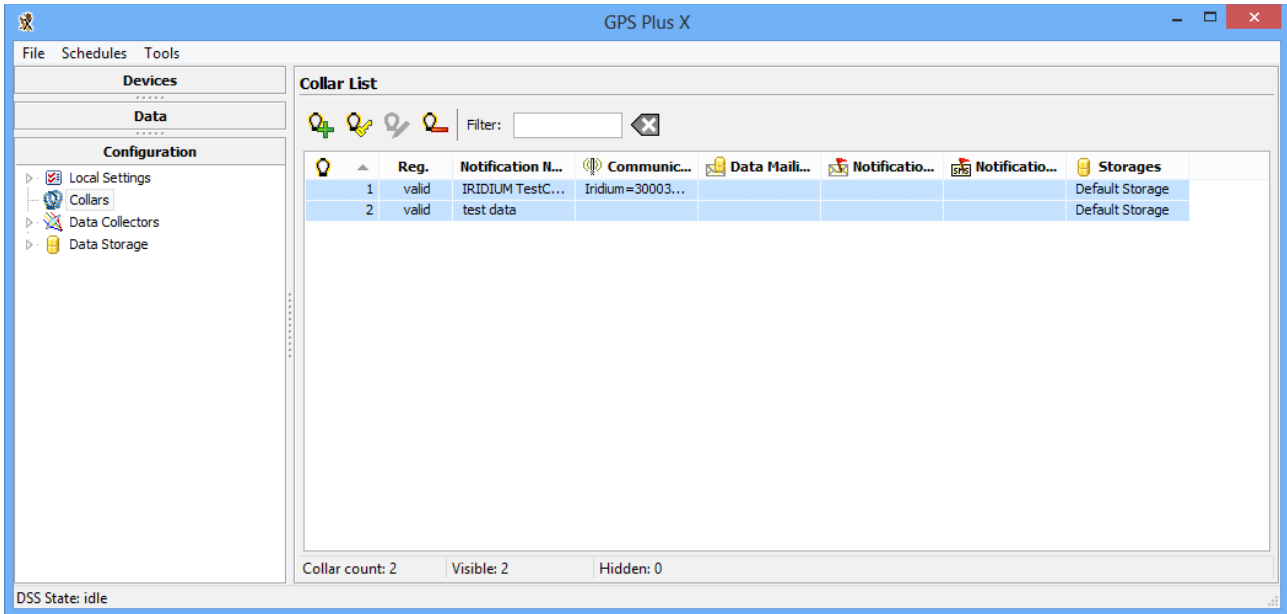
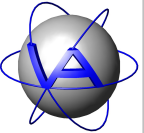


Figure 10: GPS Plus X: Collars with assigned Data Storage Modules

 VECTRONIC Aerospace GmbH	GPS Plus X quick setup guide	Document. GPS Plus X quick setup v1			
		Version	1	Date:	2013-04-10
		Issue	1	Date:	2013-04-10
		Page	7		

4 HTTP Data Collector

The HTTP Data Collector provides simple means to download data of all registered collars from an HTTP service provided by VECTRONIC Aerospace. Using the Hypertext Transfer Protocol (HTTP) allows users to download their collar's data through most firewalls. The service accepts connections on TCP ports 80 (standard HTTP port) and 443 (standard HTTPS, SSL/TLS encrypted HTTP).

The first time the collector attempts to download data it will fetch all data available on the HTTP service for the registered collars. Any subsequent attempt will only read the data that was received by the service after the most recent data record of the previous connection.

Depending on the amount of available data the initial download may take up to several minutes or even hours to complete.

4.1 Configuration

To change the HTTP Data Collector configuration, please click on the HTTP Collector node in the configuration tree in the **Configuration** section on the left-hand side of the GPS Plus X main window (Data Storage → HTTP Collector). This will open the configuration window for the HTTP Data Collector (Figure 11).

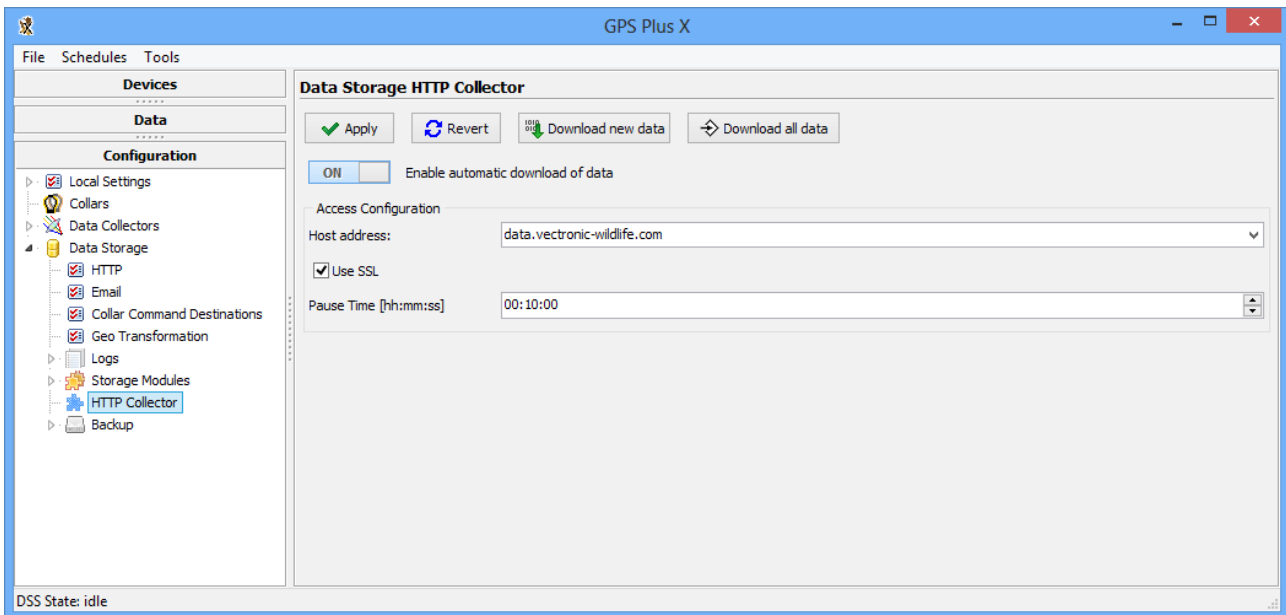


Figure 11: HTTP Data Collector Configuration

The following list describes the available parameters:

- **Enable automatic download of data**
Click this slider to enable or disable the automatic data download
- **Host address**
Address of the HTTP Data Service (Default: data.vectronic-wildlife.com)

	VECTRONIC Aerospace GmbH	<i>GPS Plus X quick setup guide</i>	Document. GPS Plus X quick setup v1			
			Version	1	Date:	2013-04-10
			Issue	1	Date:	2013-04-10
			Page	8		

- **Use SSL**

Defines whether SSL (TLS) encrypted communication channels shall be used to download the data (Default: ON, recommended)

- **Pause Time**

This parameter defines the time interval between two consecutive attempts to download data from the HTTP Data Service (Format: hh:mm:ss, Default: 00:10:00)

To apply your changes press the **Apply** button. To revert the changes made in this form to the currently active configuration press the **Revert** button.

Please do NOT change the 'Host address' and 'Use SSL' parameters unless told to do so by VECTRONIC Aerospace.

4.2 Downloading Collar Data

If the HTTP Data Collector is configured to automatically download collar data, no further action is required by the user. As soon as the GPS Plus X Data Storage Service is running data will be downloaded in intervals defined in the collector's configuration.

The first time the collector attempts to download data it will fetch all data available on the HTTP service for the registered collars. Any subsequent attempt will only read the data that was received by the service after the most recent data record of the previous connection.

It is also possible to manually download data which might be needed in cases where automatic download is not desirable. To only download new data that arrived after the previous connection, press the **Download new data** button. To download ALL available data of all registered collars (again), press the **Download all data** button.

4.3 Validation

To check whether all collars and the HTTP Data Collector are configured correctly users may take a look at the HTTP collector log which can be found in the Logs section of the Data Storage service configuration node in the configuration tree. See (Figure 12) for details. The log contains information about number of messages downloaded per collar and error messages in case of connection problems.



**VECTRONIC
Aerospace
GmbH**

GPS Plus X quick setup guide

Document.	GPS Plus X quick setup v1		
Version	1	Date:	2013-04-10
Issue	1	Date:	2013-04-10
Page	9		

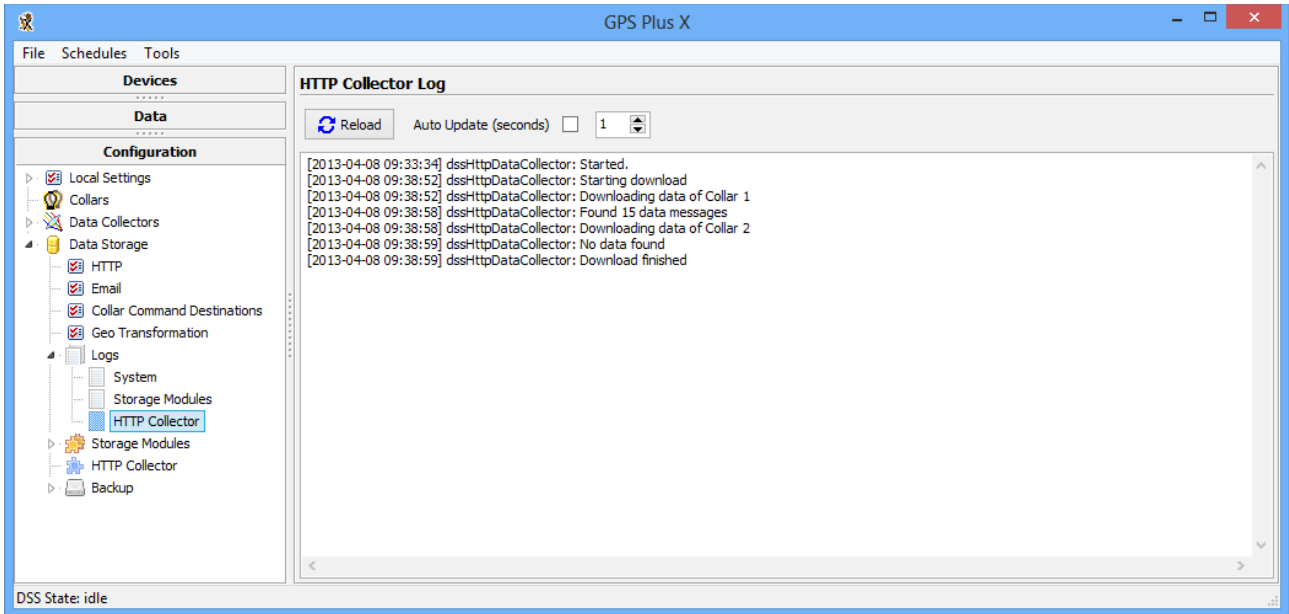


Figure 12: HTTP Data Collector Log

Another possibility to verify whether the system is working correctly is to open the **Data Storage Service Status Frame** by clicking on the **Storage** node of the tree structure in the **Data** section of the main window (Figure 13). If data is currently being processed, the **Currently processing** tab page shows the number of remaining messages to be processed per collar.

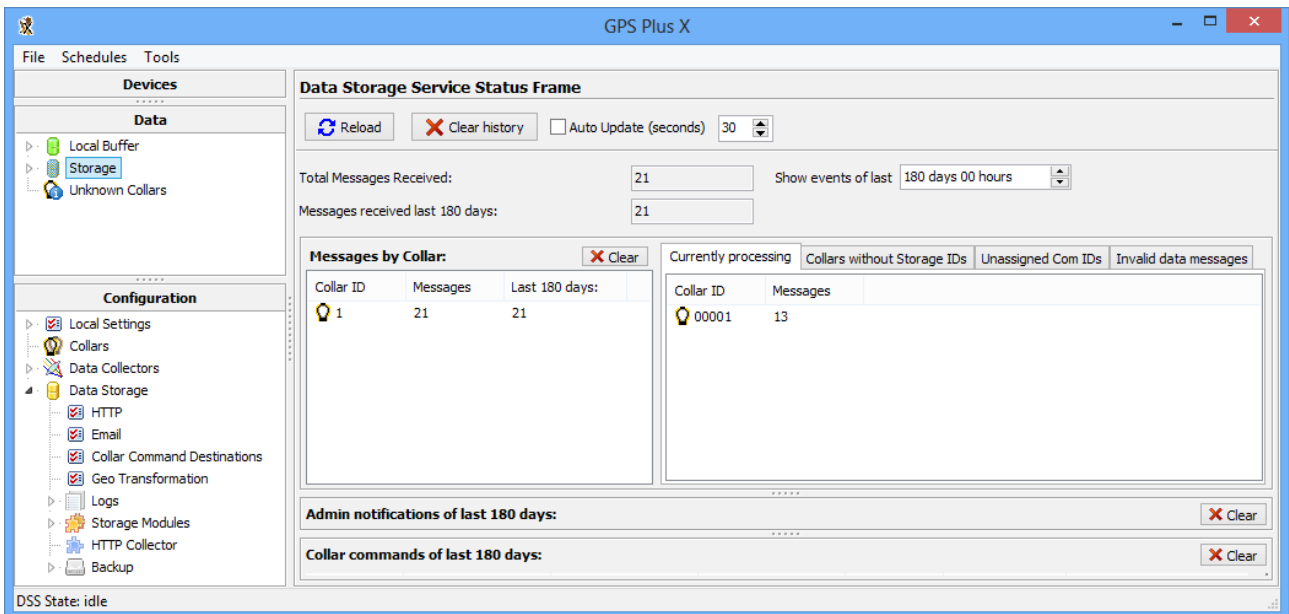
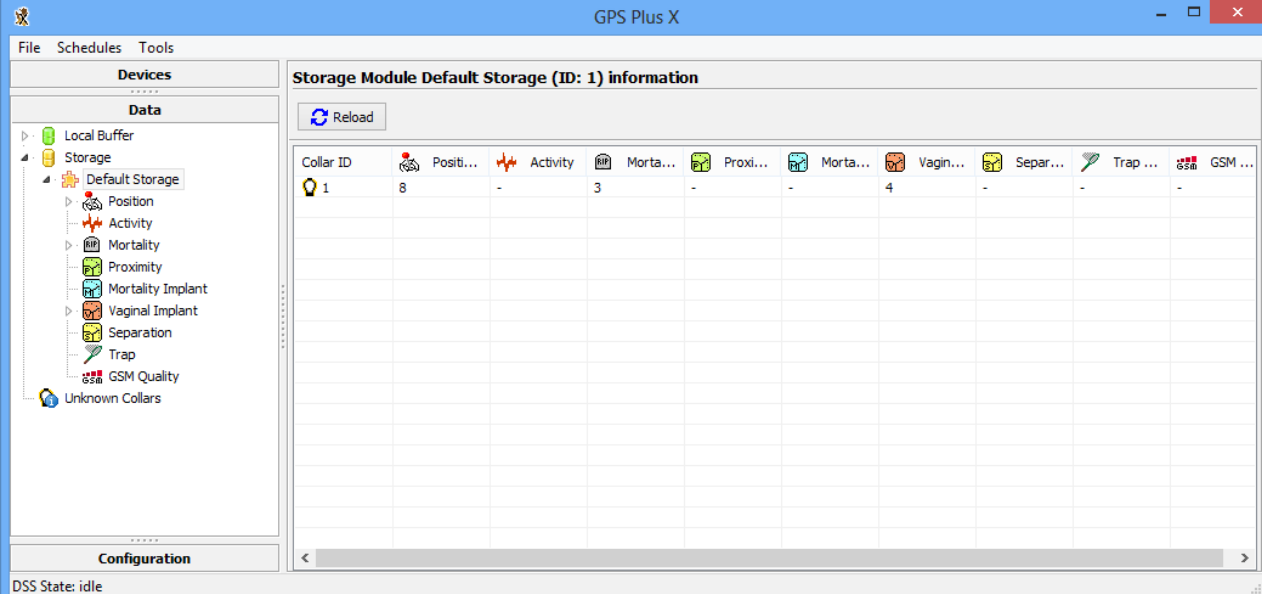


Figure 13: Data Storage Service Status Frame

 VECTRONIC Aerospace GmbH	GPS Plus X quick setup guide	Document. GPS Plus X quick setup v1			
		Version	1	Date:	2013-04-10
		Issue	1	Date:	2013-04-10
		Page	10		

5 Access Collar Data

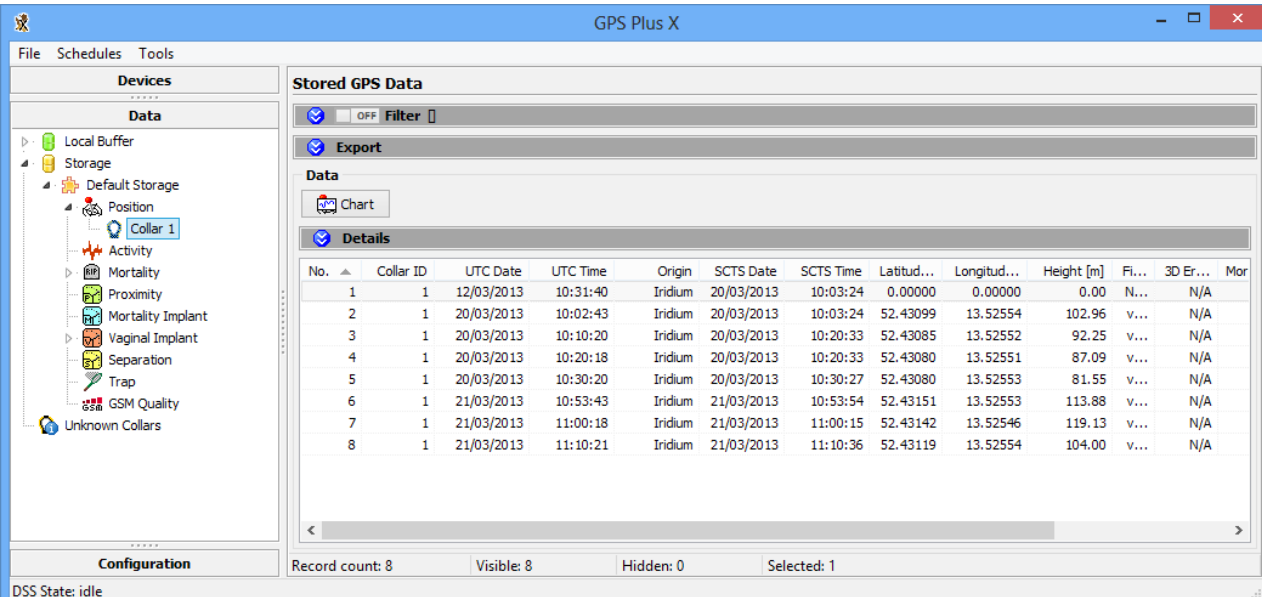
Collected collar data can be accessed easily in GPS Plus X. Expand the Storage node of the data tree in the Data section of the main window (by clicking the black triangle in front of the node) and click on the Default Storage node. This will present an overview of collar data stored in this Data Storage Module, showing the number of data records per data type per collar (Figure 14).



Collar ID	Positi...	Activity	Morta...	Proxi...	Morta...	Vagin...	Separ...	Trap ...	GSM ...
1	8	-	3	-	-	4	-	-	-

Figure 14: Storage Module information

Click in any of the non-empty table cells will open a data frame for that type of data of the collar represented by the table row. It is also possible to access collar data by expanding the Default Storage and then one of the data type nodes (e.g. Position, Activity, ...) and then selecting a collar (Figure 15).



No.	Collar ID	UTC Date	UTC Time	Origin	SCTS Date	SCTS Time	Latitud...	Longitud...	Height [m]	Fi...	3D Er...	Mor
1	1	12/03/2013	10:31:40	Iridium	20/03/2013	10:03:24	0.00000	0.00000	0.00	N...	N/A	
2	1	20/03/2013	10:02:43	Iridium	20/03/2013	10:03:24	52.43099	13.52554	102.96	v...	N/A	
3	1	20/03/2013	10:10:20	Iridium	20/03/2013	10:20:33	52.43085	13.52552	92.25	v...	N/A	
4	1	20/03/2013	10:20:18	Iridium	20/03/2013	10:20:33	52.43080	13.52551	87.09	v...	N/A	
5	1	20/03/2013	10:30:20	Iridium	20/03/2013	10:30:27	52.43080	13.52553	81.55	v...	N/A	
6	1	21/03/2013	10:53:43	Iridium	21/03/2013	10:53:54	52.43151	13.52553	113.88	v...	N/A	
7	1	21/03/2013	11:00:18	Iridium	21/03/2013	11:00:15	52.43142	13.52546	119.13	v...	N/A	
8	1	21/03/2013	11:10:21	Iridium	21/03/2013	11:10:36	52.43119	13.52554	104.00	v...	N/A	

Figure 15: Stored GPS Data frame