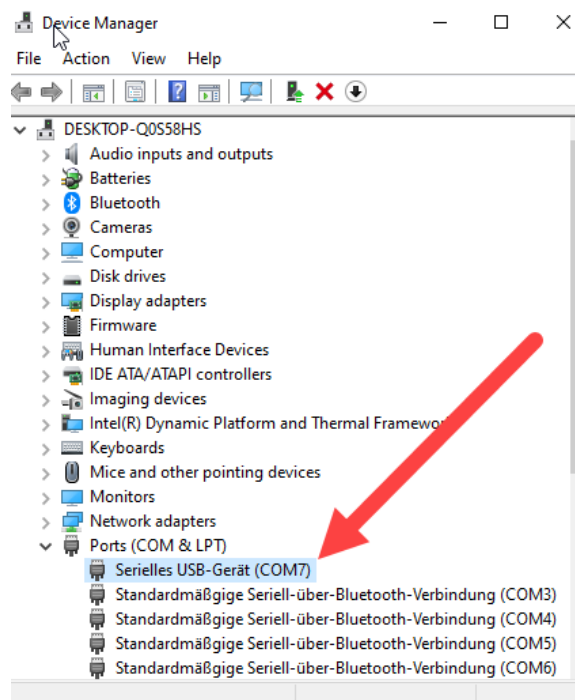


# VERTEX Motion Communication Tool User Manual

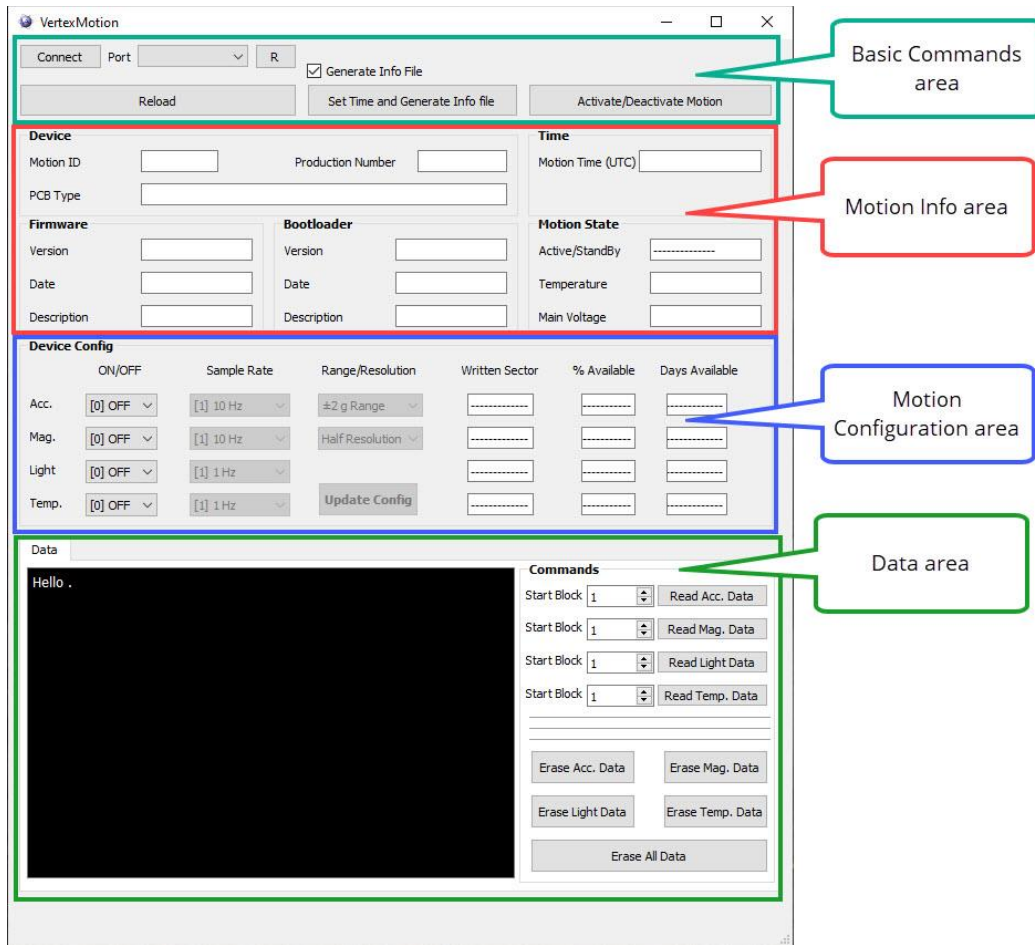
Download: <https://www.vectronic-aerospace.com/downloads/#software>

VECTRONIC delivers the VERTEX Motion with its pre-defined configurations. Before deployment it only must be activated. The tool is to activate the Motion, view its information, change configurations and read/erase its data.

1. Download and run Vertex\_Motion\_com\_Tool.exe and go through the setup to install the tool.
2. Connect VERTEX Motion via USB-cable (USB to 4-pin header, delivered from VECTRONIC).
3. Open Device Manager and get Motions COM-Port ID (COMx)

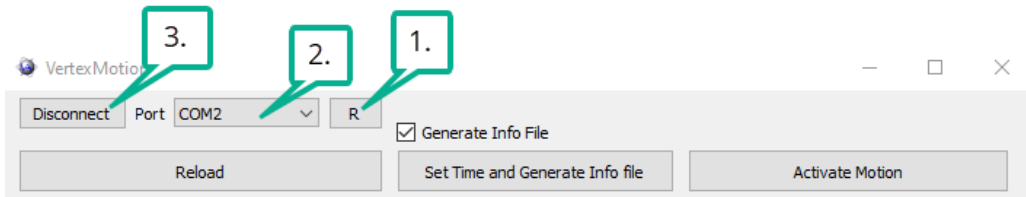


#### 4. Tool Overview:



#### 5. Connect Motion to the software (Basic Command area):

1. Press 'R' to update connected COM-Devices
2. Choose COM-Port
3. Press 'connect'



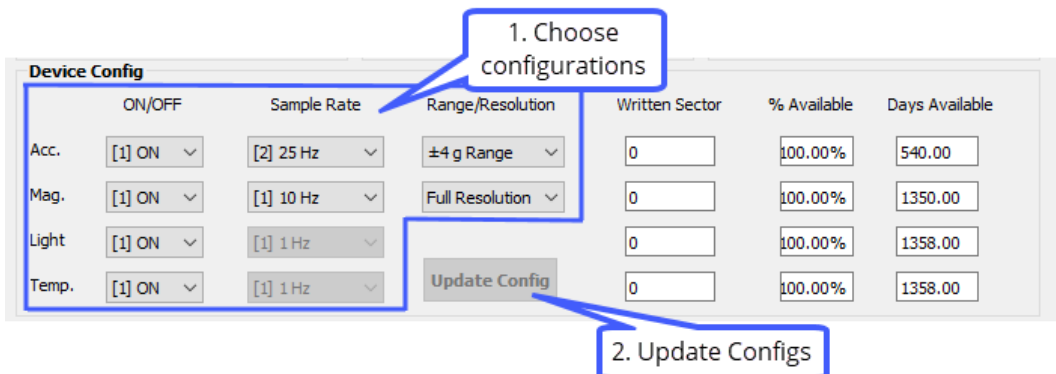
After successfully connecting the Motion, Motion's information and configuration are shown in the according area.

- Reload: Reloads Motion information.
- Set Time and generate Info file: Sets Motion time to current PC time. In case the checkbox 'Generate Info File' is selected, Motion's Info file with current configuration setup is stored in user's documents folder.

- Activate/Deactivate VERTEX Motion: enable/disable data collect of the VERTEX Motion.

**Before you deploy the VERTEX Motion: Press 'Activate Motion' and check whether the state 'active' is shown in the 'Motion Info area'.**

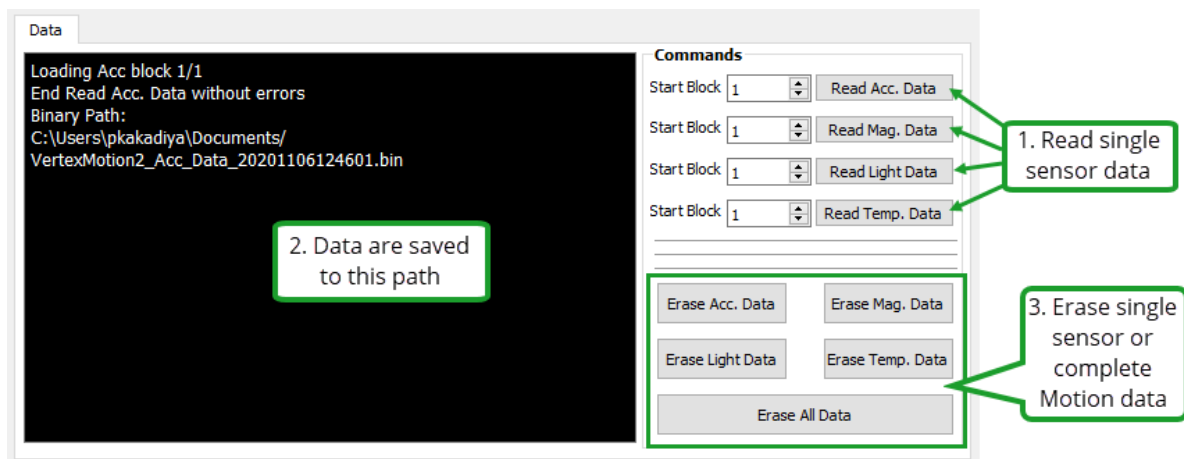
6. Motion Info area: Displays Motion information
7. Motion Configuration area: Displays configuration and activation of all Motion sensors.



- Acc.: Acceleration Sensor- select acc. Data sample rate (10, 25, 50Hz) and measurement range ( $\pm 2, 4, 8, 16g$ ).
- Mag.: Magnetometer sensor- select sample rate (10, 20, 50Hz) and resolution (Full: 16 Bit data sample resolution / Half: 8 Bit data sample resolution).
- Written sector: Used data storage of according sensor.

**Whenever you make changes to the configurations, press 'Update Configs' in order to apply the new settings.**

8. Data area:  
Read data and save files automatically to user's document folder.



9. In case of reading data error:

If an error occurs while reading data, an error message is shown inside the black log window. (In the example above no error occurs ('End Read Mag. Data without errors'). In case of an error you do not have to load all data from the beginning, you can set the Loading Block (Start Block) to the number before the error occurs. When continuing data download after an error, an additional file data file will be created.

10. Erase either specific data or all Motion data at once.

**Note: The Motion only collects data if it is activated and sensors are enabled by according Device Config setting. Activate the Motion in the Basic Commands area.**

**Note: Keep the Collar magnet and Drop Off magnet away from the Motion. If they are too close, the magnets may cause damage to the Motion.**



---

**VECTRONIC Aerospace GmbH**  
**Carl-Scheele-Str. 12**  
**12489 Berlin**  
**Germany**

**wildlife@vectronic-aerospace.com**  
**www.vectronic-aerospace.com**  
**Phone: +49 30 6789 4990**  
**Fax: +49 30 6789 5230**