



# GPS Collars Quickstart Guide

PROGRAMMING OF COLLARS, SENSORS AND EQUIPMENT IS PART OF OUR FREE CUSTOMER SERVICE. ALWAYS DOUBLE CHECK THAT YOUR REQUIRED SETTINGS ARE CORRECT BY CHECKING THE COLLAR INFO FILES ON THE SUPPLIED USB THUMB DRIVE.  
NOTE THAT OUR PRODUCTS ARE DELIVERED UNDER EXCLUSION OF WARRANTY FOR CONFIGURATION.

**IMPORTANT NOTE:** You must always test the collars AT LEAST 48 hrs before deployment to make sure they are working in your area and you are receiving data from one of our communication platforms. For warranty reasons do not deploy untested collars to animals.

1.

## Unwrap collars and verify that you have received all ordered equipment.

Make sure that the magnets are attached to the electronic housing and the Drop Offs (if ordered).

On the included USB drive you will find your collar registration keys (.keyx) and collar information files. Our software and manuals can be found on our website ([www.vectronic-aerospace.com](http://www.vectronic-aerospace.com)).

**DO NOT PLUG ANY DEVICE EXCEPT THE USB THUMB DRIVE INTO YOUR PC AT THIS POINT!**

2.

## Install GPS PLUS X Collar Manager Software

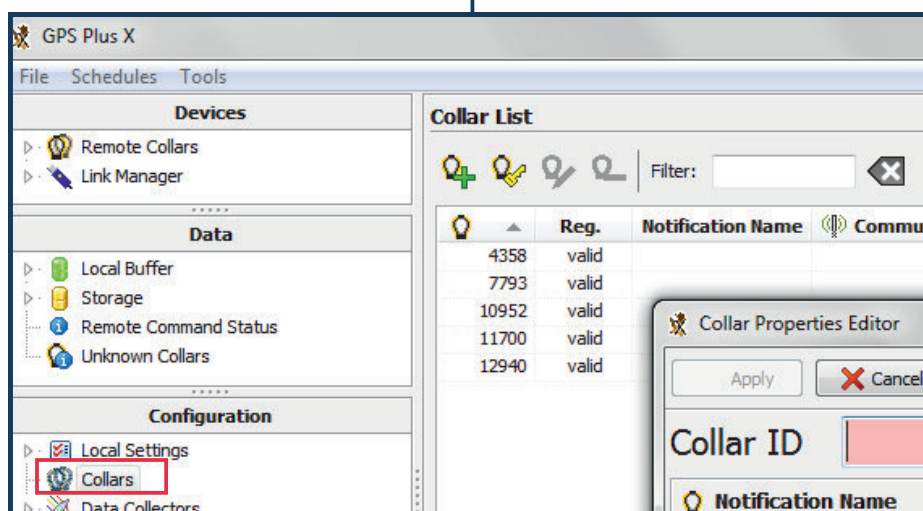
Download the GPS PLUS X Collar Manager Software from our website (<https://www.vectronic-aerospace.com/downloads/>) and start the setup by opening the GPS PLUS X \*.exe file.

Start the program when finished.

3.

## Register your collars in GPS PLUS X

Go back to the USB drive and copy all necessary key files (.keyx) to your computer according to the installation guide. You can then register your collars in the Configuration Tree in GPS PLUS X.



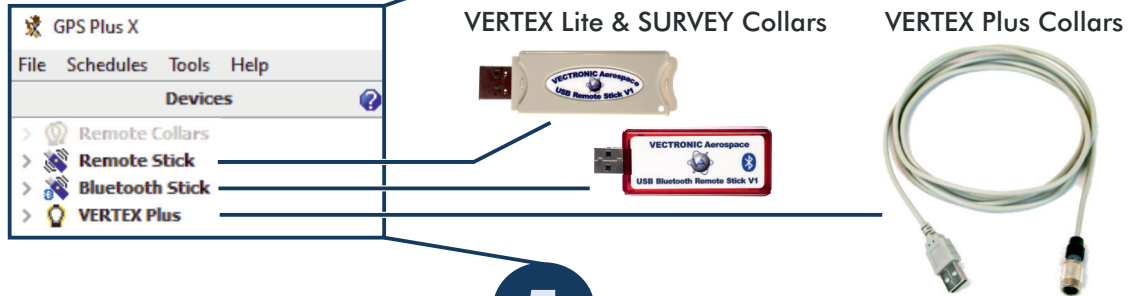
4.

### Connecting your collars with the PC

Plug the collar interface device, that you received with your collars, into your PC. The communication device should then pop up in GPS PLUS X under *Devices*.

If not, please refer to the *GPS PLUS X Manual*.

NOTE: There are different interfaces for the different collar types.



5.

### Get to know your collars

Make yourself familiar with the collars.

Check their Setup with the info-files. Run a few test trials (1-2 days) to make sure the collars work and you understand the messages you will receive from the collar once deployed.

FOR TESTING: Place the collars outside with a clear view to the sky at least one meter apart from each other, remove the upper magnet (round) and leave until data is received through one of the communication platforms. After the test, turn the collar off again by reattaching the magnet.

**Do not test the Drop Off, it can only be used once!**

6.

### Deploy your collars

When deploying the collars, make sure that the silver connector cap that covers the communication port on some of the models, not all, is secured and the batteries are correctly fixed and sealed.

Remember to remove the round magnet from the collar, as well as, the cylindrical magnet from the Drop Off!

### Want a quick and simple overview of your collars whereabouts?

Check out our new web interface *INVENTA*!

Visit [inventa.vectronic-wildlife.com](http://inventa.vectronic-wildlife.com) and register now!

### You need further information?

Refer to the manuals for further information and assistance. If in doubt, feel free to contact VECTRONIC Aerospace customer support. For news about firmware updates or anything else regarding our products please subscribe to our newsletter or contact us directly!



Download the Manual for GPS PLUS X



Register for our new web interface *INVENTA*



Download GPS PLUS X from our website



Check out our tutorial How To Start In GPS PLUS X

VECTRONIC Aerospace GmbH  
Berlin, Germany  
Phone: +49 30 6789 4990

VECTRONIC Aerospace USA  
Iowa, USA  
Phone: +1 319 626 2267

VECTRONIC Aerospace CA  
Ontario, Canada  
Phone: +1 905 535 1514

